

TITAN

Heavy Duty. High Output. Zero Compromise.



>80
CRI Colour
Rendering
Index



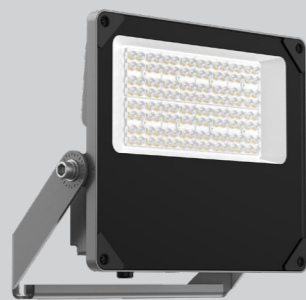
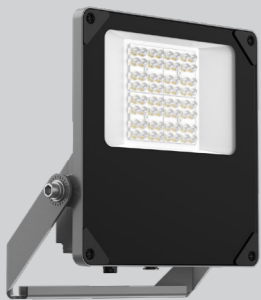
IP66
Ingress
Protection
Rating



IK08
Impact
Rating



Flicker
Free



APPLICATIONS:

Industrial & Infrastructure: Area lighting, general industrial facilities, manufacturing facilities, warehouses
Public & Commercial: Outdoor recreation areas



TITAN

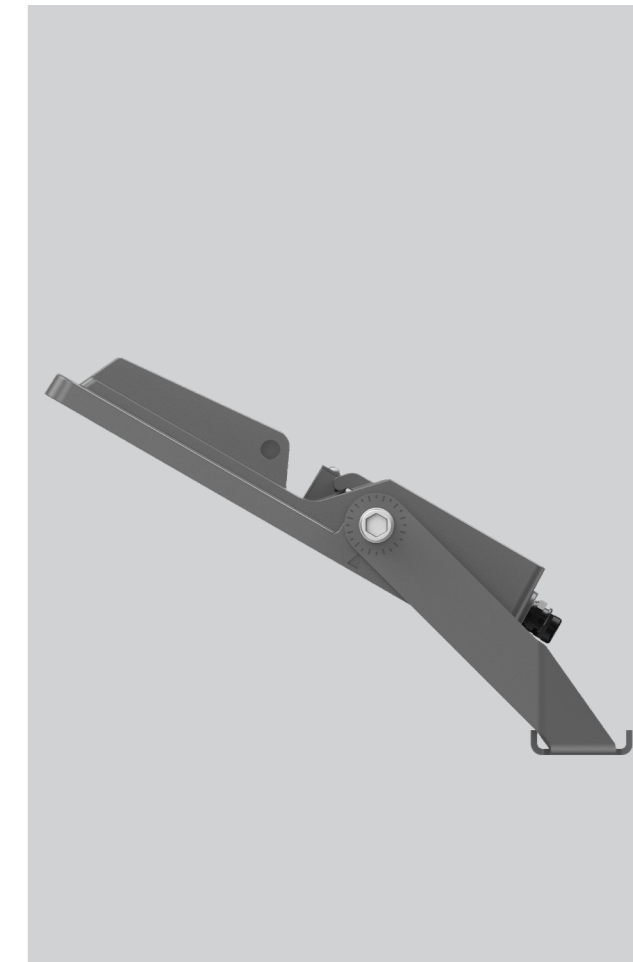
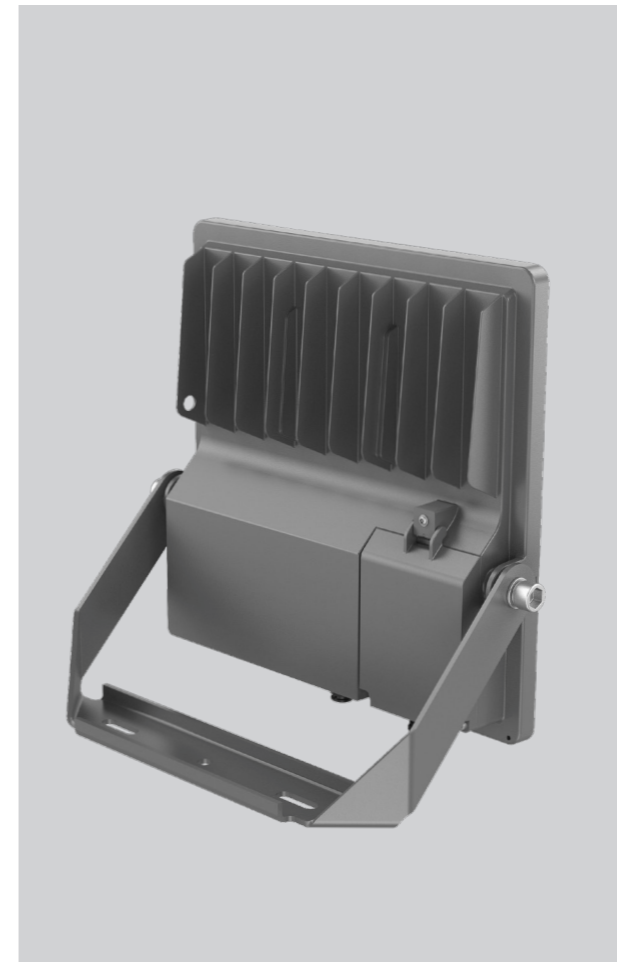
is built for ports, industrial sites, and large-scale applications. With power options from 50W to 500W, marine-grade coating, 3G vibration testing, and IP66 protection, it thrives in harsh environments. Asymmetric distribution ensures precise light placement, with symmetric options available for broader coverage.



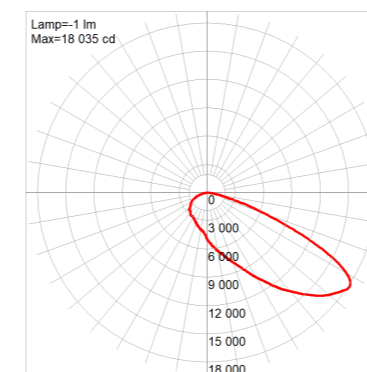
IP RATING IP66	CRI > 80	BEAM ANGLE 80 x 120°	FLICKER-FREE YES	OPERATING TEMP. -30 to 50°C
PRODUCT COLOUR Gray (RAL870-3)	PROJECTED LIFESPAN >100,000hrs @ Ta 25°C (L80)	WARRANTY 5 Years		



Heavy Duty.
 High Output.
 Zero Compromise.



PHOTOMETRIC DIAGRAM



ELECTRICAL

Input Voltage	220-240Vac, 50/60Hz
Power Factor	> 0.90
Electrical Classification	Class I
Surge Protection	10kV

KEY INFORMATION

Product Code	Power	Lumen	CCT	IK Rating	Dimming	Driver
TITAN50W830-A	25 / 37.5 / 50W	3,443 / 5,365 / 7,421 lm	3000 K	IK08	Non-Dimmable	In Built
TITAN150W830-A	75 / 112 / 150W	11,581 / 16,789 / 21,809 lm				
TITAN300W830-A	150 / 225 / 300W	23,710 / 34,622 / 44,906 lm				
TITAN500W830-A	250 / 375 / 500W	38,706 / 56,292 / 72,702 lm				

DIMENSIONS & WEIGHTS

Product Code	A x B x C (mm)	Weight (kg)
TITAN50W830-A	349x310x56	2.5
TITAN150W830-A	430x388x62	4.7
TITAN300W830-A	504x436x68	6.4
TITAN500W830-A	624x489x72	10.9

